

# Sehome High School

**Design Advisory  
Committee Meeting**

*November 16, 2016*



**dawson**

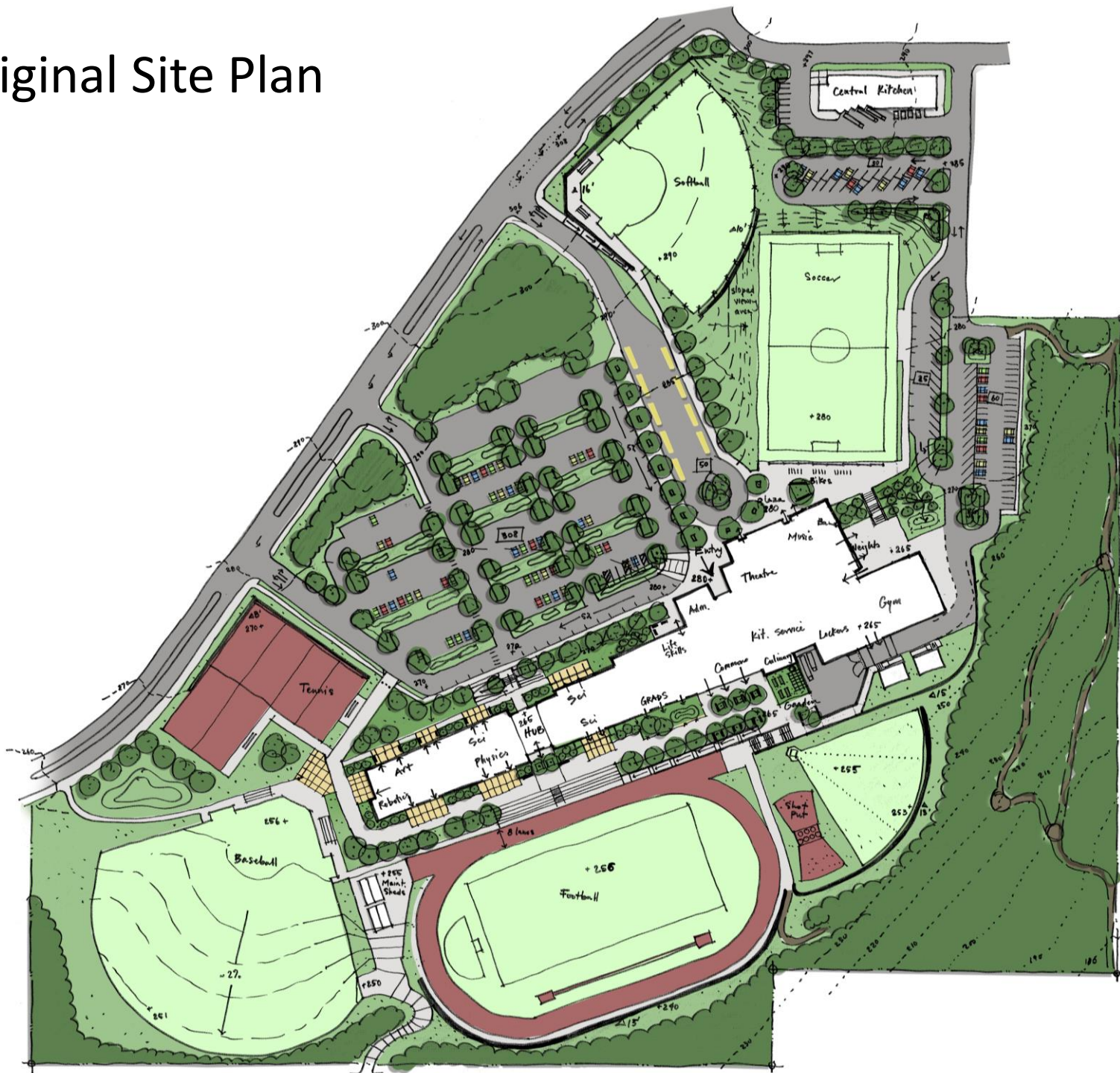
**DYKEMAN**

INSPIRING EVERYDAY SPACES



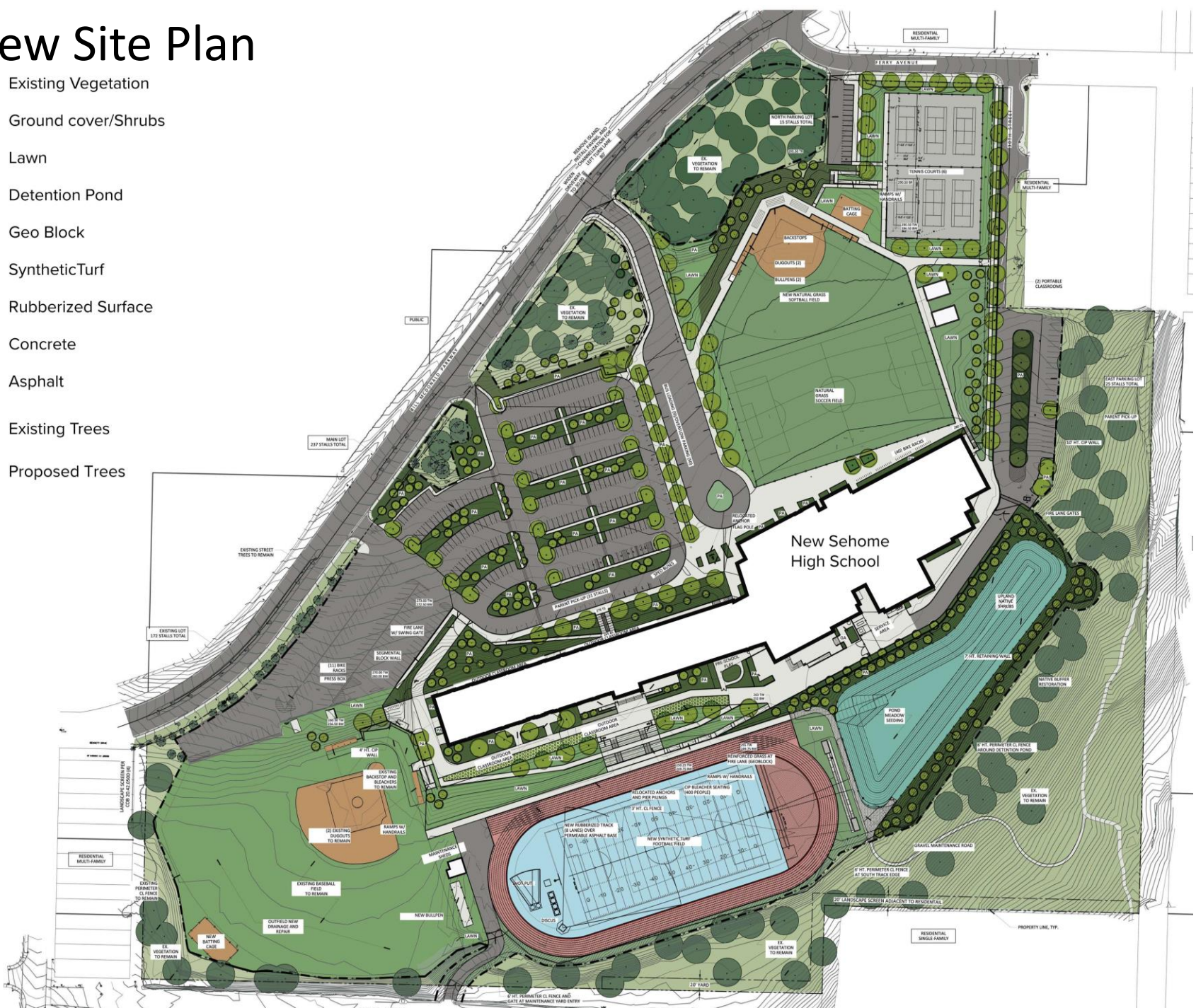
- The physical characteristics of the school *should inspire learning*.
- Great teachers are supported – *collaboration space* and technology should *facilitate and support teacher professional development and instruction*.
- Occupants enjoy a *safe, inclusive, welcoming, healthy and nurturing environment* that supports *diversity*, promotes *relationships* and nurtures *innovation*.
- The physical characteristics of the school environment should meet current teaching and learning needs and *adapt to future needs*.
- The school is a *hub of activity*, a source of *community pride* and promotes *positive relationships* between students, staff and the community.
- The campus will be a *sustainable environment* that promotes *global citizenship* and *environmental awareness*.

# Original Site Plan



# New Site Plan

-  Existing Vegetation
-  Ground cover/Shrubs
-  Lawn
-  Detention Pond
-  Geo Block
-  SyntheticTurf
-  Rubberized Surface
-  Concrete
-  Asphalt
-  Existing Trees
-  Proposed Trees



# Original Floor Plans

Level 3

- THIRD FLOOR LEGEND
- CIRCULATION
  - Circulation
  - COUNSELING
  - EXTENDED LEARNING
  - GENERAL ED
  - LIBRARY
  - LIFE SKILLS
  - MECH. / ELEC.
  - OUTDOOR SPACE
  - PE
  - PERFORMING ARTS
  - SUPPORT

- SECOND FLOOR LEGEND
- ADMIN
  - CIRCULATION
  - EXTENDED LEARNING
  - FACULTY
  - GENERAL ED
  - LIFE SKILLS
  - MECH. / ELEC.
  - NURSE
  - PE
  - PERFORMING ARTS
  - SUPPORT

Level 2

- FIRST FLOOR LEGEND
- BUSINESS
  - Career Technical Education
  - CIRCULATION
  - Circulation
  - COMMONS
  - CTE
  - EXTENDED LEARNING
  - GRADS
  - MECH. / ELEC.
  - PE
  - SCIENCE
  - SUPPORT
  - VISUAL ARTS

Level 1



# New Floor Plans



## Program Legend

- ADMIN
- BUSINESS
- CIRCULATION
- COMMONS
- COUNSELING
- CTE
- EXT. LEARNING
- EXTERIOR SPACE
- FACULTY
- GEN. ED.
- GRADS
- LIBRARY
- PERFORMING ARTS
- PHYS. ED.
- SCIENCE
- SPED
- SUPPORT
- VISUAL ARTS

Level 2



0 40' 80' 160'

Scale: 1" = 80'-0"

Level 1

# Interior Perspective Map



## Program Legend

- ADMIN
- BUSINESS
- CIRCULATION
- COMMONS
- COUNSELING
- CTE
- EXT. LEARNING
- EXTERIOR SPACE
- FACULTY
- GEN. ED.
- GRADS
- LIBRARY
- PERFORMING ARTS
- PHYS. ED.
- SCIENCE
- SPED
- SUPPORT
- VISUAL ARTS

Level 2



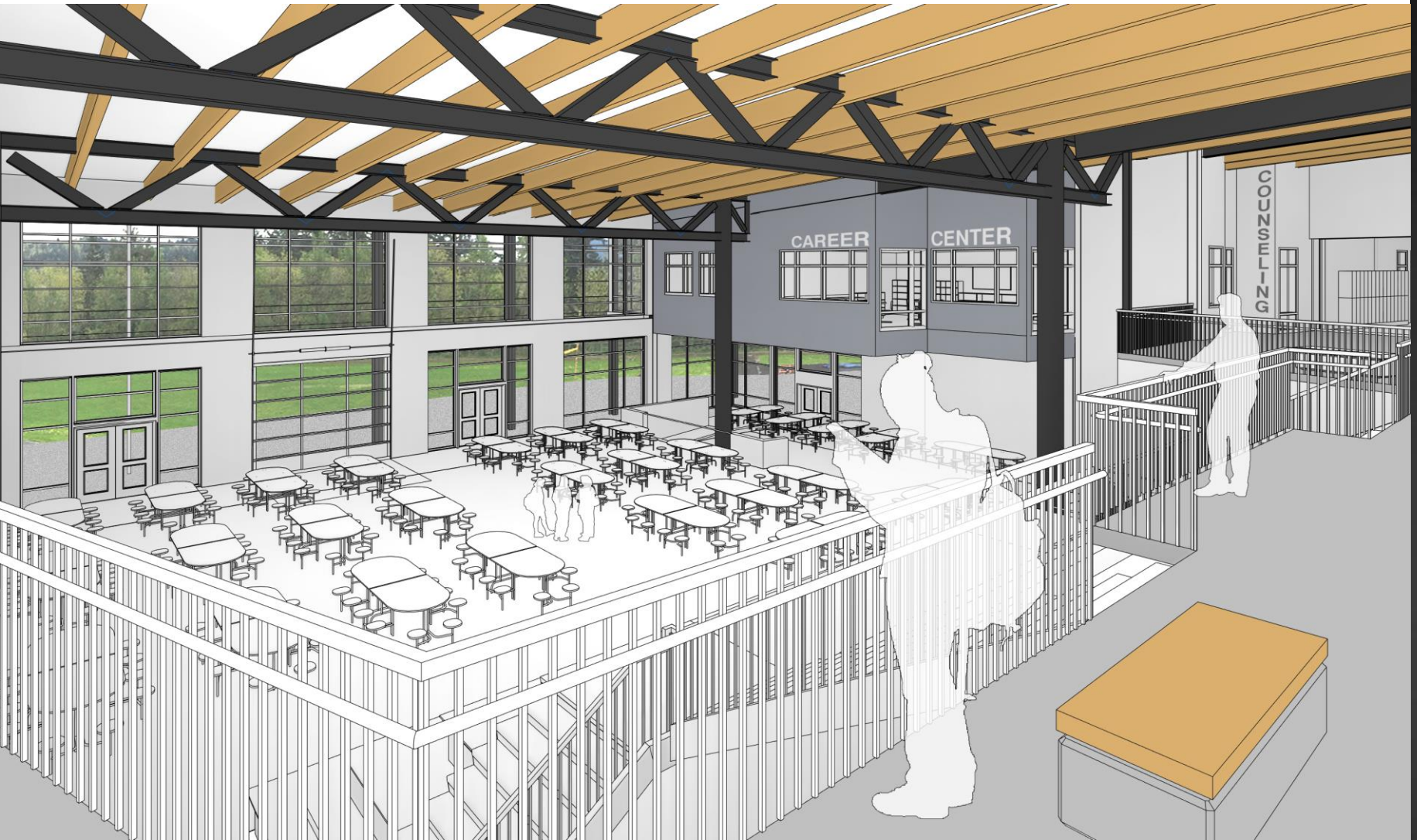
0 40' 80' 160'

Scale: 1" = 80'-0"

Level 1



1 – MAIN ENTRY LOOKING SOUTH



2 – COMMONS LOOKING SOUTHWEST







## 5 – LIBRARY



## 6 – EXTENDED LEARNING





## 7 – STUDENT HUB



8 – COMMONS LOOKING NORTHEAST





9 – COMMONS LOOKING SOUTHWEST

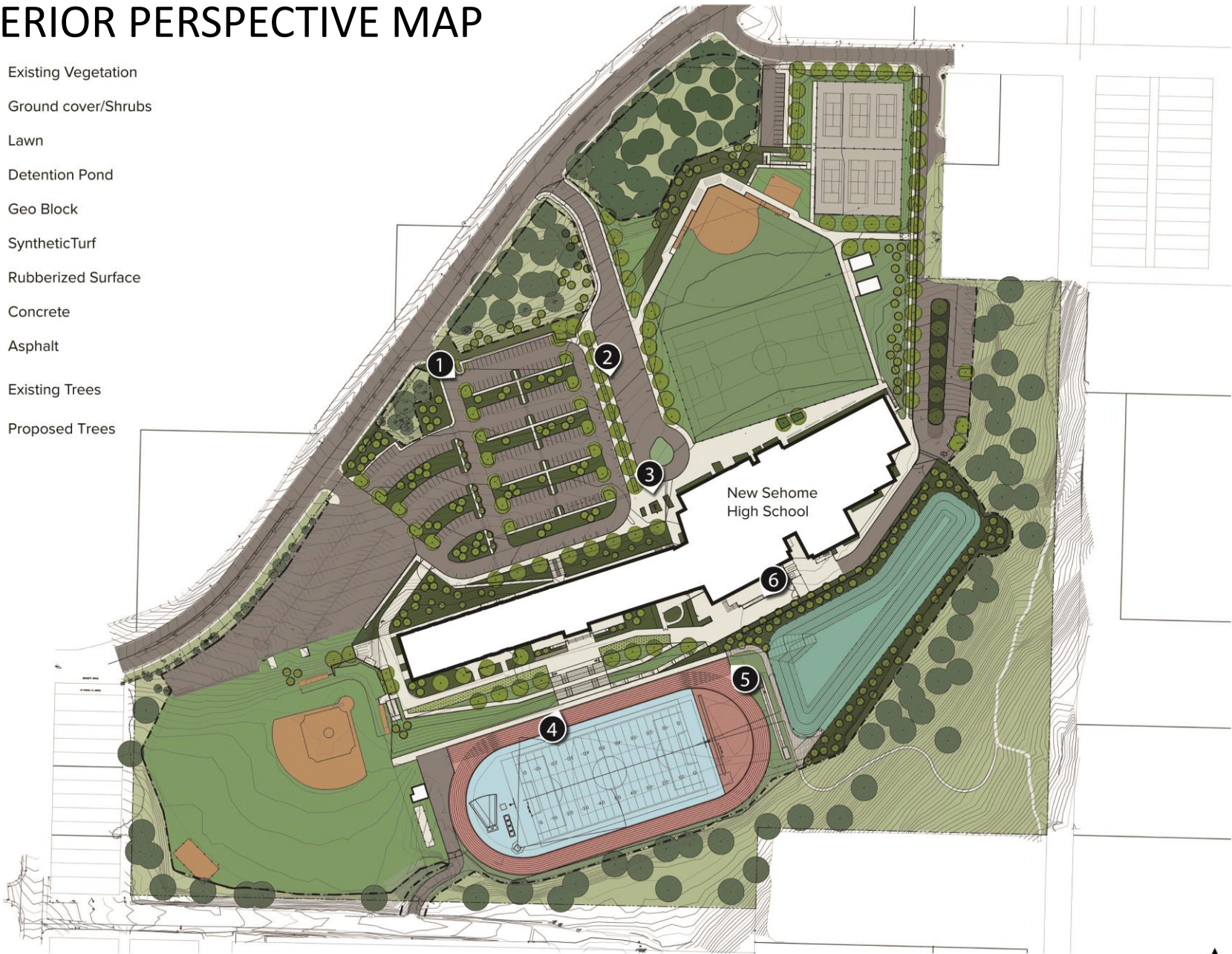




## 10 – ATHLETICS

# EXTERIOR PERSPECTIVE MAP

- Existing Vegetation
- Ground cover/Shrubs
- Lawn
- Detention Pond
- Geo Block
- SyntheticTurf
- Rubberized Surface
- Concrete
- Asphalt
- Existing Trees
- Proposed Trees













5 - SOUTH FAÇADE – BIRD'S-EYE VIEW LOOKING NORTHWEST





6 - EXTERIOR COMMONS – LOOKING SOUTHWEST



# Are we still meeting the Guiding Principles?

- The physical characteristics of the school *should inspire learning*.
- Great teachers are supported – *collaboration space* and technology should *facilitate and support teacher professional development and instruction*.
- Occupants enjoy a *safe, inclusive, welcoming, healthy and nurturing environment* that supports *diversity*, promotes *relationships* and nurtures *innovation*.
- The physical characteristics of the school environment should meet current teaching and learning needs and *adapt to future needs*.
- The school is a *hub of activity*, a source of *community pride* and promotes *positive relationships* between students, staff and the community.
- The campus will be a *sustainable environment* that promotes *global citizenship* and *environmental awareness*.

